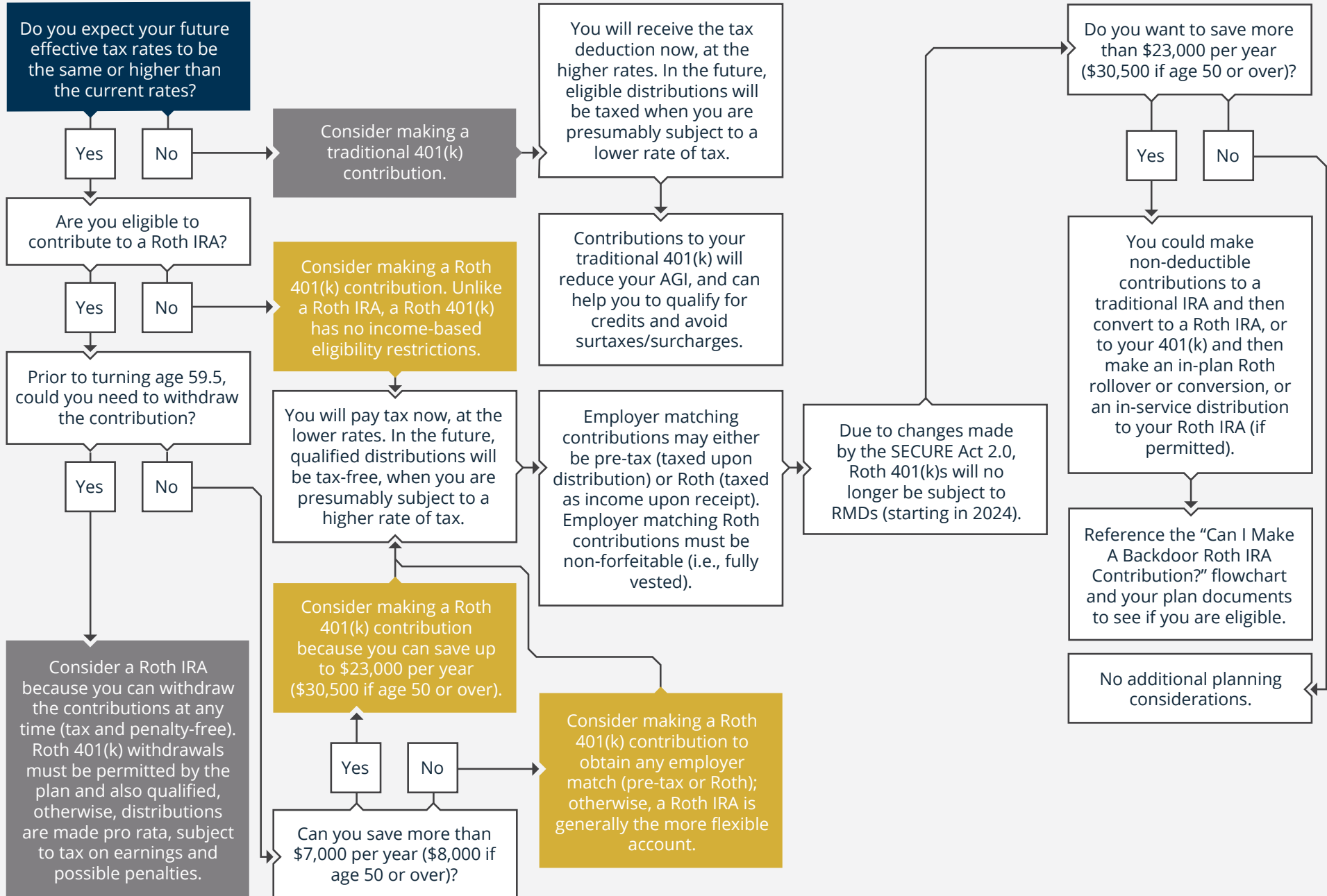


2024 · SHOULD I CONTRIBUTE TO MY ROTH 401(K)?



START HERE



The information provided herein was obtained from sources believed to be reliable and is believed to be accurate as of the time presented, but is without any express or implied warranties of any kind. Neither Swad Wealth Management, LLC nor Zack Swad warrant that the information is free from error.

The information provided herein is not advice specific to you or your circumstances but is instead general tips and education. None of the information provided herein is intended as investment, tax or legal advice. Your use of the information is at your sole risk. Before considering acting on any information provided herein, you should consult with your investment, tax or legal advisor.

Under no circumstances shall Swad Wealth Management, LLC or Zack Swad be liable for any direct, indirect, special or consequential damages that result from your use of, or your inability to use, the information provided herein.

This information is not intended as a recommendation, offer or solicitation to buy, hold or sell any financial instrument or investment advisory services.

Zack Swad, CFP®, CWS®, BFA™, AWMA®, AAMS®

100 Stony Point Rd, Suite 244, Santa Rosa, CA 95401
zack@swadwealth.com | 707-899-1010 | www.swadwealth.com